



**AFTER BUILD**  
AFTER CARE FOR NEW HOMES

# Plan it, build it, sell it ... support it?



**Don't allow new homes  
After Care to be an after thought.**

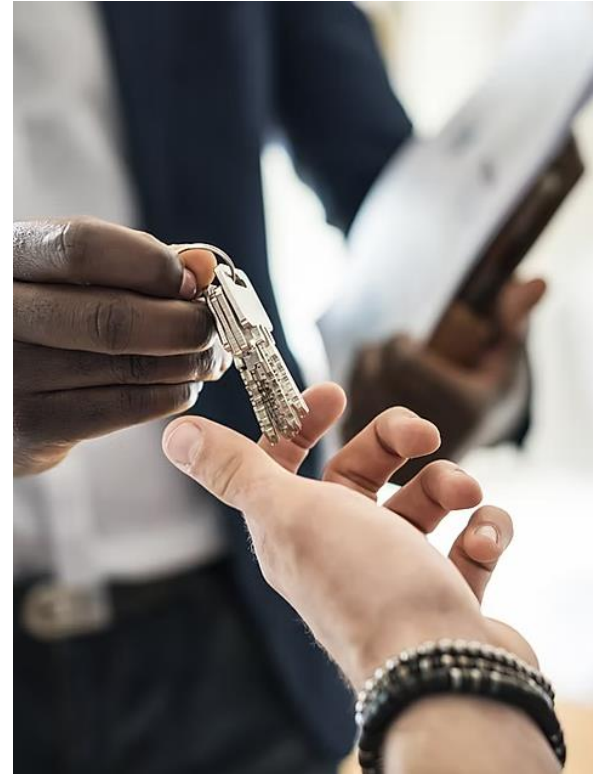


**AFTER BUILD**  
AFTER CARE FOR NEW HOMES

# Every new home needs 2 years support.

- A developer's responsibility doesn't end at key handover
- Warranty providers expect 2 years After Care
- New Homes Quality Code expect 2 years After Care

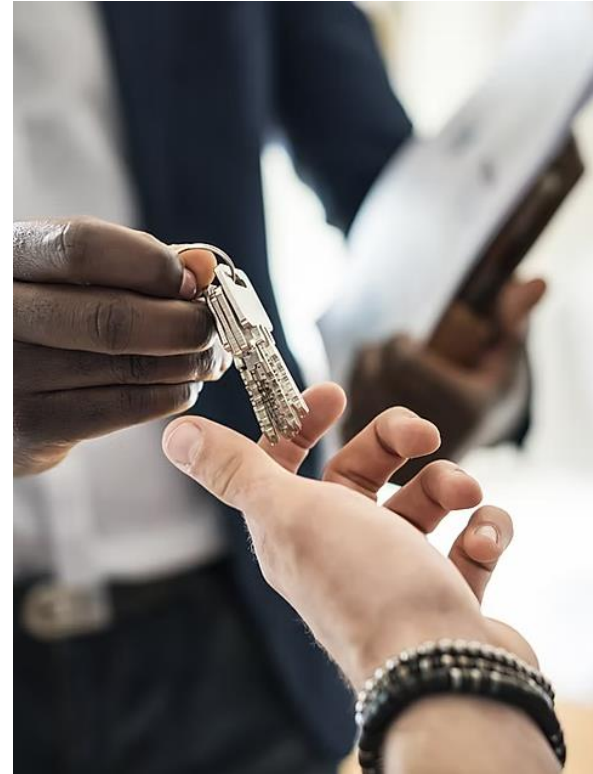
**We understand how costly and distracting this can be - especially for SMEs**



# Impact on your costs and cash.

- Planning - Complex and expensive
- Materials - Rising costs
- Contractors - Availability issues
- Mortgages - Higher rates
- Completions - Market slowdown

**Result - Cost management and cash preservation**



# Keep your customers happy.

- After Build is warranty and industry code compliant
- The service is fully inclusive
- Requires no resource from the developer
- Totally addresses the After Care obligation
- Operates nationally
- 20+ years successful operation





# Cost of DIY After Care!

**Do you know how much After Care costs a developer when they handle it themselves?**

- Minimum legal wage\* = £23,810
- £28,095 gross (inc. NI/ pension)
- £56,190 X2 people \*\*
- X2 years = £112,381



\*National Living Wage 21Yrs old+

\*\*Requires a minimum of 2 dedicated people



# Most cost-effective After Care available.

## Example:

|       | AFTER BUILD | DEVELOPER | SAVING   |
|-------|-------------|-----------|----------|
| Plots | Rate/Plot   | Cost/Plot | Per Plot |
| 3     | £550        | £37,460   | £36,910  |
| 7     | £528        | £16,054   | £15,526  |
| 12    | £506        | £9,365    | £8,859   |
| 17    | £484        | £6,611    | £6,127   |
| 25    | £468        | £4,495    | £4,027   |
| 35    | £440        | £3,211    | £2,771   |
| 45    | £423        | £2,497    | £2,074   |

Our service is **FIXED PRICE** - so you know the cost regardless of how many snags or defects are reported.



**AFTER BUILD**  
AFTER CARE FOR NEW HOMES

# How it works.

- All occupants provided free App to 'Managing Your New Home'
- Here they have access to Occupant Portal to report snags and defects
- Plethora of other supportive content
- Trained Warranty Controllers available to answer questions and diagnose issues
- We raise job instructions
- Organise appointments with contractors





# Why we're successful.

- We provide a friendly, professional service, fully supporting occupants
- Our team is trained to warranty build standards
- After Build has the scale of economies no developer can match which is why we can operate from as little as £220 per plot for 2 years cover

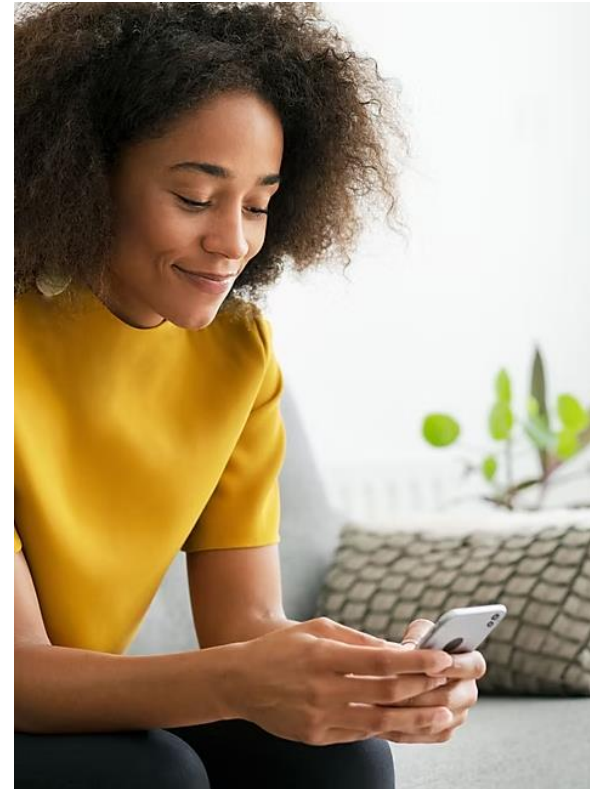
**There is no better way to meet your After Care obligations!**



# Reporting a defect is a cinch!

- Our App is free
- It can operate on ANY mobile device and platform
- This means an occupant can report anything at any time of day

**We like to make life simple!**



# Some numbers.

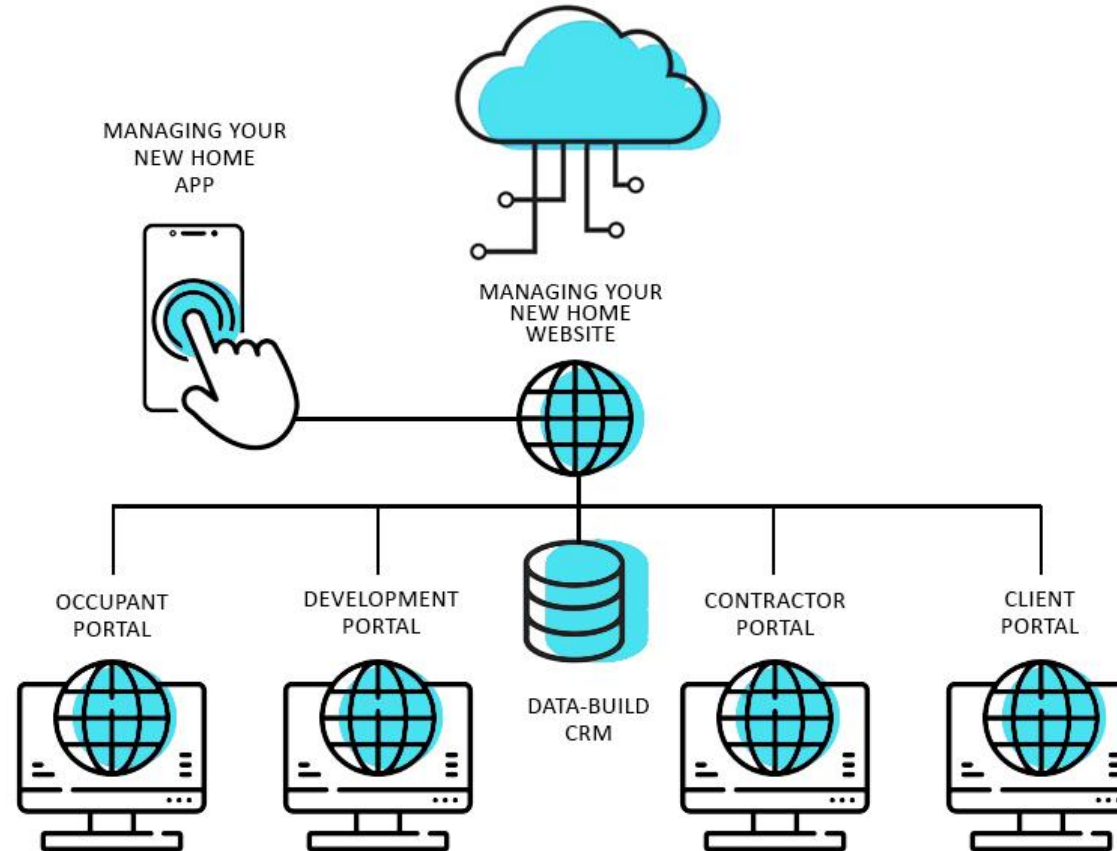


**100,000** Defects resolved. **1,500** Developments engaged.  
**30,000** Homeowners helped. **2,000** Contractors managed.



**AFTER BUILD**  
AFTER CARE FOR NEW HOMES

# Technology (how it works).



# Portal Demonstrations.



## OCCUPANT PORTAL:

Link: <https://www.defects.uk.com>  
Username: [Elliew@afterbuild.com](mailto:Elliew@afterbuild.com)  
Password: Afterbuild123!



## CONTRACTOR PORTAL:

Link: <https://portal.contractorinfo.uk.com>  
Username: [Ashleyw@afterbuild.com](mailto:Ashleyw@afterbuild.com)  
Password: MasonMount19



## CLIENT PORTAL PORTAL:

Link: <https://www.clientservices.uk.com>  
Username: [Millye@afterbuild.com](mailto:Millye@afterbuild.com)  
Password: Afterbuild123





# Additional services.



**OOH EMERGENCY  
COVER**



**QUALITY ASSURANCE  
INSPECTION\***



**HOME  
DEMONSTRATIONS\***

\* In certain geographical areas only



**AFTER BUILD**  
AFTER CARE FOR NEW HOMES

# Make it After Care. Not after thought.



CONTACT:  
Mark Fawcitt  
Director of Sales and Marketing

E: [markf@afterbuild.com](mailto:markf@afterbuild.com)  
M: 07342 037810  
W: [www.afterbuild.com](http://www.afterbuild.com)



**AFTER BUILD**  
AFTER CARE FOR NEW HOMES